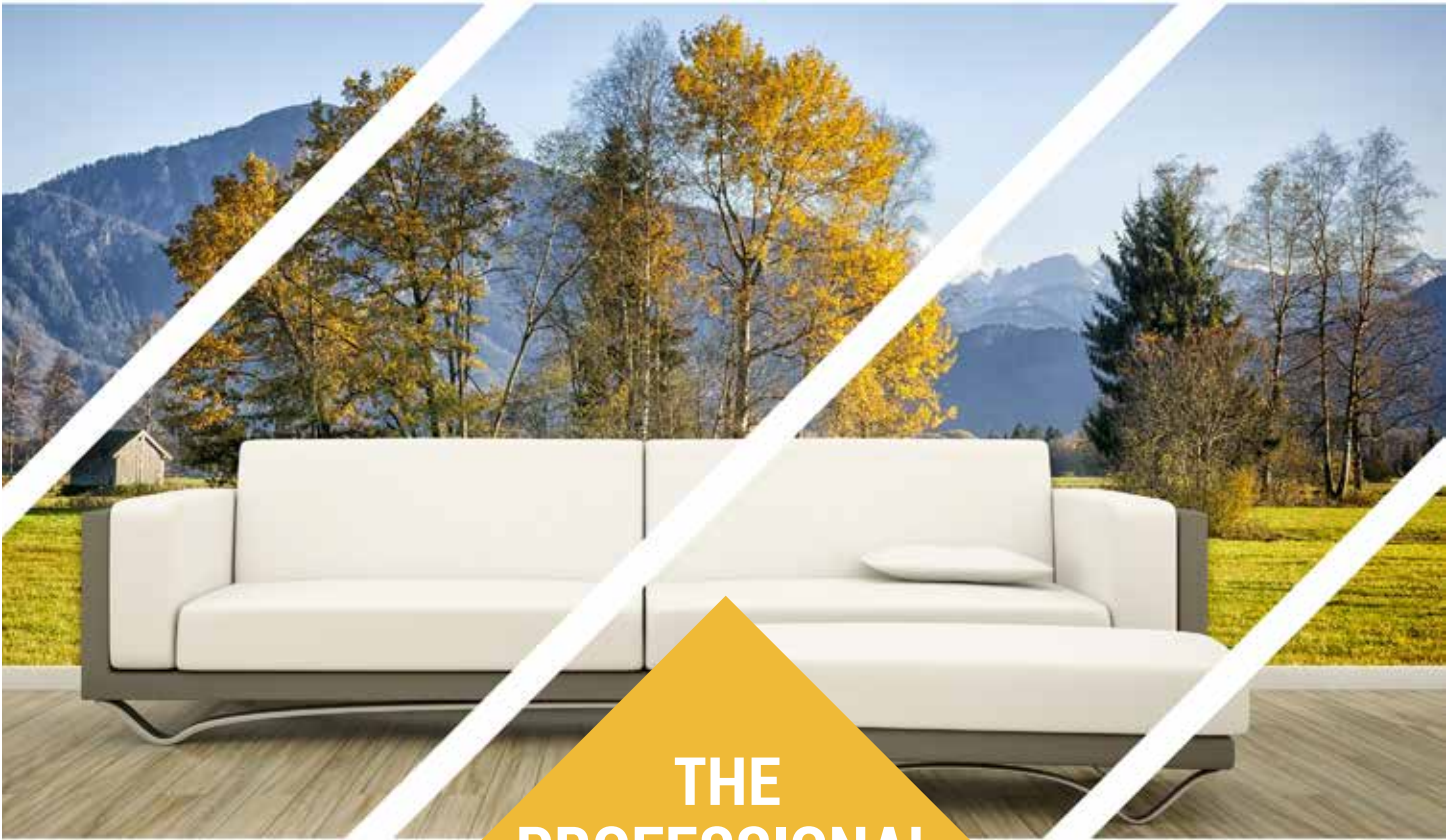


KERNOW JET[®]

INTERIORS



**THE
PROFESSIONAL
CHOICE**
for creative, tough
wallcoverings

Certified for
HP Latex Inks

White embossed printable wallcoverings
with a non-woven backing



KernowJet INTERIORS is the ideal solution for creative and robust wall art. Create unique, customized and decorative murals and wallcoverings for any space.



Perfect for adding custom environments to any location:

Hotels & conference centers

Retail spaces & POS

Offices & breakrooms

Schools & universities

Hospitals & clinics

Transportation & travel facilities

Product features include:

Designed for tough environments

Easy application

Water resistant and washable

Removable without residue

Optimal printing on WF inkjet printers

Bio-Pruf® and fire rated

KernowJet INTERIORS is just one part of the Kernow wide-format range. Discover many other solutions at www.kernowna.com.

Stock Items

KernowJet INTERIORS 500



Smooth Touch 500



Light Canvas 500

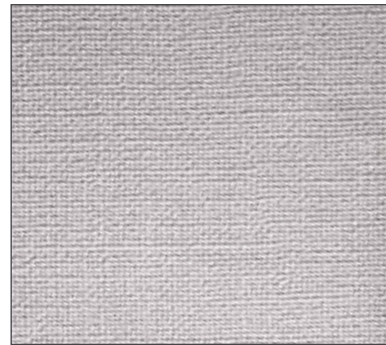


Linnen 500

KernowJet INTERIORS 620



Light Touch 620



Canvas 620

On Demand

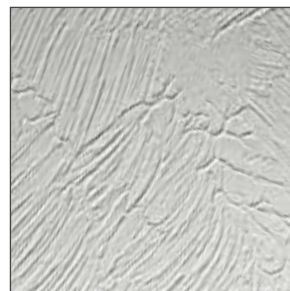
MOQ 1 roll for KernowJet INTERIORS 500 / 2000 lm MOQ for KernowJet INTERIORS 620



Sand



Dust



Brush



Porcelain



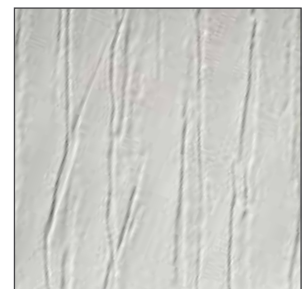
Façade



Rustique



Parchment



Bamboo

TECHNICAL SPECS AND INFORMATION

Roll length	Stock items 100 feet / 30.5 m On demand KernowJet INTERIORS 500: 164 feet / 50 m On demand KernowJet INTERIORS 620: 100 feet / 30.5 m
Construction	Non-woven substrate with topcoated vinyl
Properties	Special top coating developed for optimal printing with all common WF-inkjet inks Easy and fast application, paste the wall, not the printed wallpaper Removable without residue
Bio-Pruf®	Special treatment inhibits the growth of bacteria and mold
Washable	Can be washed after printing with mild detergent and a damp cloth. Please read the installation recommendations!
Resistance prior to printing	Chemicals such as soap, detergents, alcohol, ammonia, alkali, diluted acids
Adhesives	Contact your sales representative for more information
Compliant	Compliant to EN 259 -2
Safety/ Ecological	Material is classified as non-hazardous DIN 52900 or 91/155/EEG,2001/58/EC
Fire resistance	KernowJet INTERIORS 500: Euro class B s1 d0 Class 0 / 1 BS 476 part 6/7 M1 NF P 92501 / 92507 B1 DIN 4102 - 01 ABP Number: P-MPA-E-04-507 KernowJet INTERIORS 620: ASTM Test-Method E84 - 15a
Lightfastness	≥ 7 International Woolscale BS EN 20105 / ISO 105-B02
Installation	Full instructions inside the core of each roll and on www.kernowna.com



KernowJet INTERIORS 500

~500 μ	~20 mil	350 ±gsm
-----------	------------	-------------

KernowJet INTERIORS 620

~620 μ	~24.4 mil	450 ±gsm
-----------	--------------	-------------

51.2 inch	1300 mm
--------------	------------

