

# PRODUCT GUIDE



WIDE  
FORMAT

K E R N O W J E T<sup>®</sup>



K E R N O W  
N O R T H A M E R I C A

(855) 537-6691 | [info@kernowna.com](mailto:info@kernowna.com) | [www.kernowna.com](http://www.kernowna.com)

# K E R N O W J E T<sup>®</sup>

KernowJet high performance media delivers fast drying and vibrant results in **portable and permanent displays**, with innovative and unique solutions developed for **glass and floor** applications.

The satin textured lightblock technology used in the KernowJet Ultimate range produces tough, perfectly flat roller banners that do not need to be laminated.

This technology accelerates production times, improves workflow and offers a wider color gamut and flatter banners than laminated alternatives.

Specific features are built-in to many products e.g. repositionable, air-egress, 'no residue' adhesives for dry application and printable metallic films.

KernowJet offers a truly **unique range of solutions** for the wide-format display market.

**The KernowJet product range is compatible with solvent, latex and UV inks.** It is available in a comprehensive range of standard sizes but can be customized to specific lengths and widths.



K E R N O W  
N O R T H A M E R I C A

### ROLL-UP DISPLAYS

				Width (in)
TEXTURED LAMINATED EFFECT	Polyester, matte grey back 98% opacity	<ul style="list-style-type: none"> <li>Premium roll-up material</li> <li>Textured, anti-reflective bright white front surface</li> <li>Scratch and water resistant, no need for lamination</li> <li>Antistatic treatment avoids attracting dust and slipping in the printer</li> <li>Stiff, perfect flatness</li> </ul>	<b>Certified for HP Latex Inks</b>	<b>Ultimate 180</b> 180STL <b>180μ</b> 36 42 50
	Polyester composite, matte grey back 98% opacity	<ul style="list-style-type: none"> <li>Unbeatable price-quality ratio</li> <li>Textured surface</li> <li>Scratch-resistant, no need for lamination</li> <li>Antistatic treatment avoids attracting dust and slipping in the printer</li> <li>Stiff, perfect flatness</li> </ul>		<b>Ultimate 230</b> 230STL <b>230μ</b> 36 50 60
MATTE	Polyester grey back 98% opacity	<ul style="list-style-type: none"> <li>Premium roll-up material</li> <li>Anti-reflective matte bright white front surface</li> <li>Optimum ink adhesion</li> <li>Tough and water resistant</li> <li>Antistatic treatment avoids attracting dust and slipping in the printer</li> <li>Stiff, perfect flatness</li> </ul>	<b>Certified for HP Latex Inks</b>	<b>Supreme 225</b> 225STVL <b>229μ</b> 36 
		<ul style="list-style-type: none"> <li>Premium roll-up material</li> <li>High gloss bright white front surface</li> <li>Optimum ink adhesion</li> <li>Tough and water resistant</li> <li>Antistatic treatment avoids attracting dust and slipping in the printer</li> <li>Stiff, perfect flatness</li> </ul>		<b>Supreme 300</b> 300STVL <b>310μ</b> 36 42 50 60
GLOSSY	Polyester grey back 98% opacity	<ul style="list-style-type: none"> <li>Premium roll-up material</li> <li>Anti-reflective matte bright white front surface</li> <li>Optimum ink adhesion</li> <li>Tough and water resistant</li> <li>Antistatic treatment avoids attracting dust and slipping in the printer</li> <li>Stiff, perfect flatness</li> </ul>	<b>Certified for HP Latex Inks</b>	<b>Classic Matte 165</b> 165SML <b>165μ</b> 36 42 50 60
		<ul style="list-style-type: none"> <li>Premium roll-up material</li> <li>High gloss bright white front surface</li> <li>Optimum ink adhesion</li> <li>Tough and water resistant</li> <li>Antistatic treatment avoids attracting dust and slipping in the printer</li> <li>Stiff, perfect flatness</li> </ul>		<b>Classic Gloss 155</b> 155SGL <b>155μ</b> 36 * 42 50

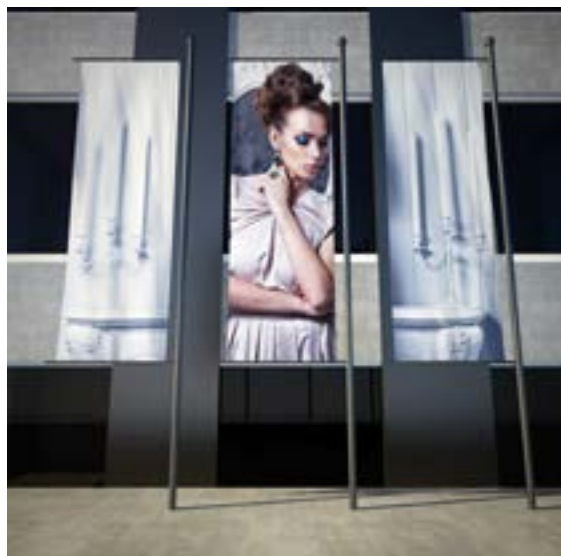
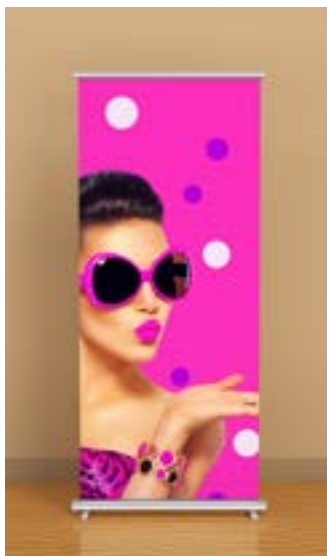
#### PRINTABILITY

- (Eco)-Solvent
- UV

- Latex
- \* from 3<sup>rd</sup> Gen Latex or later

ECONOMICAL SOLUTIONS				
ECONOMICAL SOLUTIONS	Polyester, satin grey back 98% opacity	<ul style="list-style-type: none"> <li>Economical roll-up material</li> <li>Tough satin white front polyester surface</li> <li>No need to laminate for short term displays</li> <li>Stiff, perfect flatness</li> </ul>	<b>Classic Satin 165</b> 165SSL	<b>165μ</b> ● ● 36 ● 42 50
	Polypropylene, satin white back	<ul style="list-style-type: none"> <li>Economical roll-up material</li> <li>Satin white front PP surface</li> <li>Synthetic photo base alternative with superior smoothness</li> <li>Can be grommeted &amp; sewn for cost effective posters and banner displays</li> </ul>	<b>Endura 210</b> 210SPS	<b>210μ</b> ● ● 36 54
SPECIAL UVC/LATEX	Polyester, matte grey back 98% opacity	<ul style="list-style-type: none"> <li>Bright white anti-reflective front surface</li> <li>Scratch and water resistant, no need for lamination</li> <li>Antistatic treatment avoids attracting dust and slipping in the printer</li> <li>Still, perfect flatness</li> </ul>	<b>DuraBlock 204</b> 204HML  <b>DuraBlock 153</b> 153HML	<b>205μ</b> ● ●* 36 60  <b>153μ</b> ● ●* 36
	Polyester, matte both sides white	<ul style="list-style-type: none"> <li>Printable on both sides</li> <li>Bright white anti-reflective front surface</li> <li>Scratch and water resistant, no need for lamination</li> <li>Antistatic treatment avoids attracting dust and slipping in the printer</li> <li>Stiff, perfect flatness</li> </ul>	<b>Dura 145</b> 145HWNM	<b>145μ</b> ● ●* *


\*Contact reps for information



### PRINTABILITY

- (Eco)-Solvent
- UV

- Latex
- \* from 3<sup>rd</sup> Gen Latex or later

TEXTURED LAMINATED EFFECT	Polyester, matte grey back 98% opacity	<ul style="list-style-type: none"> <li>Premium pop-up material</li> <li>Textured, anti-reflective bright white front surface</li> <li>Scratch and water resistant, no need for lamination</li> <li>Antistatic treatment avoids attracting dust and slipping in the printer</li> <li>Ideal for perfect pop-ups</li> <li>Stiff, perfect flatness</li> </ul>		<b>Ultimate 385</b> 385STL	<b>385μ</b> ● ● 36 ● 50 60
	Polyester composite, matte grey back 98% opacity	<ul style="list-style-type: none"> <li>Unbeatable price-quality ratio</li> <li>Textured surface</li> <li>Scratch resistant, no need for lamination</li> <li>Antistatic treatment avoids attracting dust and slipping in the printer</li> <li>Ideal for perfect pop-ups</li> <li>Stiff, perfect flatness</li> </ul>		<b>Supreme 500</b> 500STVL	<b>495μ</b> ● ● 36 ● 42 50
MATTE	Polyester grey back 98% opacity	<ul style="list-style-type: none"> <li>Premium pop-up material</li> <li>Anti-reflective matte bright white front surface</li> <li>Optimum ink adhesion</li> <li>Tough and water resistant</li> <li>Antistatic treatment avoids attracting dust and slipping in the printer</li> <li>Ideal for perfect pop-ups</li> <li>Stiff, perfect flatness</li> </ul>		<b>Classic Matte 290</b> 290SML	<b>290μ</b> ● ● 36 ● 50 60
GLOSSY	Polyester grey back 98% opacity	<ul style="list-style-type: none"> <li>Premium pop-up material</li> <li>High gloss bright white front surface</li> <li>Optimum ink adhesion</li> <li>Tough and water resistant</li> <li>Antistatic treatment avoids attracting dust and slipping in the printer</li> <li>Ideal for perfect pop-ups</li> <li>Stiff, perfect flatness</li> </ul>		<b>Classic Gloss 280</b> 280SGL	<b>280μ</b> ● ● 36 ●* 50

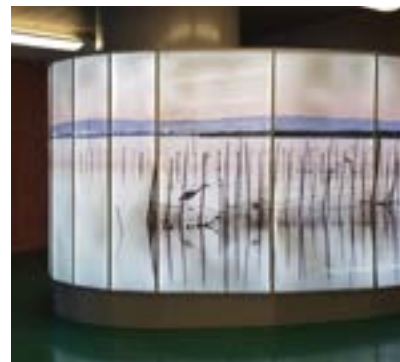
### PRINTABILITY

- (Eco)-Solvent
- UV

- Latex
- \* from 3<sup>rd</sup> Gen Latex or later

<b>MATTE</b>	Polyester, matte	<ul style="list-style-type: none"> <li>• Front print on matte high-resolution coating</li> <li>• Bright light-diffusing back-coat hides light elements</li> <li>• With solvent inks: reverse or front print - can be illuminated from either side</li> <li>• Fast dry for improved workflow</li> <li>• Optimum day/night performance</li> <li>• Superb gamut when back-lit</li> <li>• Weather resistant for outdoor displays</li> <li>• Antistatic treatment avoids attracting dust and slipping in the printer</li> <li>• Ideal stiffness for lightboxes</li> </ul>	<b>Opaline Matte 215</b> 215SMB	<b>215μ</b> ● ● 36 ● 54 60
<b>GLOSSY</b>	Polyester, glossy	<ul style="list-style-type: none"> <li>• Front print on high-gloss high-resolution coating</li> <li>• Bright light-diffusing back-coat hides light elements</li> <li>• Optimum day/night performance</li> <li>• Superb gamut when front or back-lit</li> <li>• Scratch and weather resistant for outdoor applications and scrolling displays</li> <li>• Antistatic treatment avoids attracting dust and slipping in the printer</li> <li>• Ideal stiffness for lightboxes</li> </ul>	<div style="background-color: #0070C0; color: white; padding: 5px; text-align: center; font-weight: bold;">             Certified for HP Latex Inks           </div>	<b>Opaline Gloss 201</b> 201SGB ● ● 36 ● * 42 50 54 60
<b>ECONOMICAL</b>	Polyester, matte	<ul style="list-style-type: none"> <li>• Cost-effective matte backlit material for front print</li> <li>• Optimum day/night performance</li> <li>• Fast dry for improved workflow</li> <li>• Weather resistant for outdoor displays</li> <li>• Antistatic treatment avoids attracting dust and slipping in the printer</li> </ul>		<b>Opaline Light 153</b> 153SBB
<b>SPECIAL UVC/LATEX</b>	Polyester, matte	<ul style="list-style-type: none"> <li>• Double diffusion backlit film, printable on both sides</li> <li>• Ideal combination of whiteness and translucency</li> <li>• Optimum day/night performance</li> <li>• Scratch and weather resistant for outdoor applications and scrolling displays</li> <li>• Antistatic treatment avoids attracting dust and slipping in the printer</li> </ul>	<b>Opaline Frost 195</b> 195HHF	<b>195μ</b> ● ● * *

**\*Contact reps for information**



**PRINTABILITY**

- (Eco)-Solvent
- UV

- Latex
- \* from 3<sup>rd</sup> Gen Latex or later



CLEAR	Polyester, glossy	<ul style="list-style-type: none"> <li>• Glass-clear polyester film</li> <li>• 100% water resistant</li> <li>• High-gloss coating</li> <li>• Antistatic back coating avoids attracting dust and slipping in the printer</li> </ul>	KlearView 142 142SGC	142μ	● ● 30
					●* 54
METALLIC	Polyester, glossy	<ul style="list-style-type: none"> <li>• High-gloss coating for maximum mirror finish</li> <li>• Clear antistatic back coating avoids attracting dust and slipping in the printer</li> <li>• Water resistant</li> <li>• Printable on both sides with UV-curable inks</li> </ul>	Reflektion 119 119SGM	119μ	● ● 50
					●* 60
DISPLAYS – BANNER – BLIND – ROLL UP	Evolon®	<ul style="list-style-type: none"> <li>• Special coating for perfect printability even with eco solvent inks</li> <li>• Fire rating ideal for point of sale and exhibitions</li> <li>• Perfectly sewable</li> </ul>	Evolon® 365 365SSE	365μ	● ● 36
	Co-extruded matte polyester, 100% light stop	<ul style="list-style-type: none"> <li>• Printable on both sides</li> <li>• 100% block out even in strong sunlight, no show-through</li> <li>• Dry off the printer for quick reversing</li> <li>• No lamination necessary</li> <li>• Antistatic back coating avoids attracting dust</li> <li>• Special coating prevents the film slipping in the printer</li> <li>• Ideal for double sided window displays</li> </ul>	Verso 195 195SMSD	195μ	● ● 36 ● 50

DISPLAYS – BANNER – BLIND – ROLL UP	Polyester, matte both sides black	<ul style="list-style-type: none"> <li>• Perfect black film</li> <li>• Textured Satin Jet Black with anti-static properties</li> <li>• Optimum contrast with white inks</li> <li>• Printable on both sides</li> <li>• Weather, scratch &amp; water resistant</li> <li>• No need to laminate</li> <li>• Can be produced in different colors</li> <li>• Please contact us for MOQ and further details</li> </ul>	IconiK 200 200KTB	200μ	● 36
					60

## PRINTABILITY

- (Eco)-Solvent
- UV

- Latex
- \* from 3<sup>rd</sup> Gen Latex or later

Category	Material	Properties	Product Name	Thickness	Printability	Width (in)
WALL/GLASS GRAPHICS	Polyester, matte	<ul style="list-style-type: none"> <li>Sticks on almost all smooth or slightly textured surfaces</li> <li>Can easily be repositioned several times, perfect stability</li> <li>Unique adhesive technology for dry and bubble free application</li> <li>Excellent removability for up to 6 months on most surfaces</li> <li>Antistatic treatment and anti-curl backing liner</li> </ul>	Xacte 130 130SSRP	225µ	● 36 ● 54	
FLOOR GRAPHICS	Polyester, matte	<ul style="list-style-type: none"> <li>Unique sharkskin coating absorbs the ink &amp; dries tough</li> <li>Eliminates the need to laminate</li> <li>Sharkskin structure gives great color gamut and high grip</li> <li>R10 certified</li> <li>Easy to apply &amp; easy to remove, does not tear</li> <li>No shrinkage, no risk of a rim of dirty adhesive forming around the print</li> <li>Ultra-tough polyester base, resists tearing</li> <li>Resists pallet trucks &amp; stiletto heels</li> <li>Perfect for indoor floor graphics in supermarkets, shopping centres and smooth hard floors</li> </ul>	FloorShark® 170TFG	170µ	● 54 ● 60	NEW 2017
METALLIC DOUBLE-SIDED	Polyester, glossy	<ul style="list-style-type: none"> <li>Available in Metallic Silver, Gold &amp; Rose Gold</li> <li>Removable adhesive, perfect for wet-application</li> <li>Same color effect on both sides</li> <li>Metallic Cut&amp;Print creates double sided displays</li> <li>Create bright metallic lettering and designs for windows &amp; glass</li> <li>Perfect for temporary metallic point of sale promotions</li> <li>Combinations of print &amp; CAD applications</li> <li>Good scratch resistance</li> <li>Very smooth finish, close to mirror effect</li> </ul>	Metalik® Cut&Print  074CSI Silver / Silver  074CGO Gold / Gold  074CRG Rose Gold / Rose Gold	74µ	● 54 ● 60	NEW 2017
METALLIC SINGLE-SIDED	Polyester, glossy	<ul style="list-style-type: none"> <li>Single-sided highly reflective Silver, Gold &amp; Rose Gold</li> <li>High-tack adhesive for strong permanent adhesion</li> <li>Available in Metallic Silver, Gold or Rose Gold</li> <li>Perfect film for lamination on boards &amp; smooth surfaces</li> <li>For POS decoration with or without print</li> <li>Turn any smooth surface metallic</li> <li>Ideal for packaging and doming with metallic effect</li> <li>Silver film is recommended for Color Logic® software</li> <li>Very smooth finish, close to mirror effect</li> <li>Good scratch resistance</li> <li>Can be cut and weeded</li> </ul>	Metalik® Inkjet  076SSI Silver / Silver  076SGO Gold / Silver  076SRG Rose Gold / Silver	87µ	● 54 ● 60	NEW 2017



### PRINTABILITY

- (Eco)-Solvent
- UV

- Latex
- \* from 3<sup>rd</sup> Gen Latex or later



Effect	Material	Product	Thickness	Printability
TEXTURED LAMINATED EFFECT	Polyester grey back 98% opacity	Ultimate Aqua 201 201CTL	197μ	• 36 • 42 • 50
MATTE		Aqua Plus 190 190CML	190μ	• 36 • 42 • 50
GLOSSY		Aqua Gloss 170 170CGL	172μ	• 36 • 42 • 50
ECONOMICAL SOLUTIONS		Aqua Matte 185 185CRL	185μ	• *

\*Contact reps for information

### PRINTABILITY

- Latex
- \* from 3<sup>rd</sup> Gen Latex or later
- Memjet
- Aqueous

# POP-UP DISPLAYS

KERNOWJET®

AQUEOUS

Width  
(in)

POLYESTER grey back 98% opacity	TEXTURED LAMINATED EFFECT	<ul style="list-style-type: none"> <li>Premium pop-up material</li> <li>Textured, anti-reflective bright white front surface</li> <li>Instant dry scuff-resistant surface, no need for lamination</li> <li>Improve both workflow and display quality</li> <li>Superior color gamut versus laminated media</li> <li>Antistatic treatment avoids attracting dust and slipping in the printer</li> <li>Stiff, perfect flatness</li> </ul>	Ultimate Aqua 316 316CTL	307μ	<ul style="list-style-type: none"> <li>● ● 36</li> <li>42</li> <li>50</li> </ul>
	GLOSSY	<ul style="list-style-type: none"> <li>Premium pop-up display film</li> <li>High gloss bright white front surface</li> <li>Instant dry for improved workflow</li> <li>Excellent color gamut and image quality</li> <li>Superb adhesion to all laminates</li> <li>Antistatic treatment avoids attracting dust and slipping in the printer</li> <li>Stiff, perfect flatness</li> </ul>	Aqua Gloss 315 315CGL	315μ	<ul style="list-style-type: none"> <li>● 36</li> <li>42</li> </ul>
	ECONOMICAL SOLUTIONS	<ul style="list-style-type: none"> <li>Cost efficient matte lightblock display film</li> <li>Fast drying and smear resistant images</li> <li>Stiff, perfect flatness</li> </ul>	Aqua Matte 300 300CRL	300μ	<ul style="list-style-type: none"> <li>● ● *</li> </ul>

\*Contact reps for information

# SPECIALITIES

Width  
(in)

CLEAR	Polyester, glossy	<ul style="list-style-type: none"> <li>Clear glossy film</li> <li>Removable two edge striped for printer recognition</li> <li>Packaged with interleaving</li> </ul>	Overlay 102 102CJC.2ES	102μ	<ul style="list-style-type: none"> <li>● *custom</li> </ul>
-------	-------------------	---	---------------------------	------	---

# SELF-ADHESIVE

Width  
(in)

PERMANENT HIGH TACK	Polyester, white	<ul style="list-style-type: none"> <li>Gloss white self-adhesive inkjet film</li> <li>Rapid drying and smear resistant</li> <li>Standard acrylic adhesive, initially repositionable increasing to permanent</li> </ul>	LabelStock Gloss 051CGWXF	50μ	<ul style="list-style-type: none"> <li>● ● *custom</li> </ul>
---------------------	------------------	--	------------------------------	-----	---

\* contact reps for information

## PRINTABILITY

- Latex
- \* from 3<sup>rd</sup> Gen Latex or later
- Memjet
- Aqueous





**KERNOW**  
NORTH AMERICA

### **About Kernow North America**

Built on innovation, Kernow North America is the global leader in optimized high-performance coatings for print, security, engineering and industrial substrates. Printer OEMs and leading national brands trust and certify Kernow solutions for wide format and narrow format specialized print media – synthetics, self-adhesives, colors, fabrics and much more.